



Company Profile



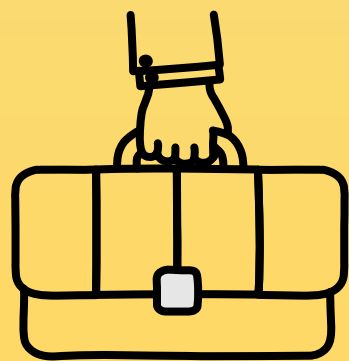
Profile

PT FOLIUM SUMATRA NAFIE was founded in 2022, with a modern business concept to answer the challenges of increasingly advanced business development.

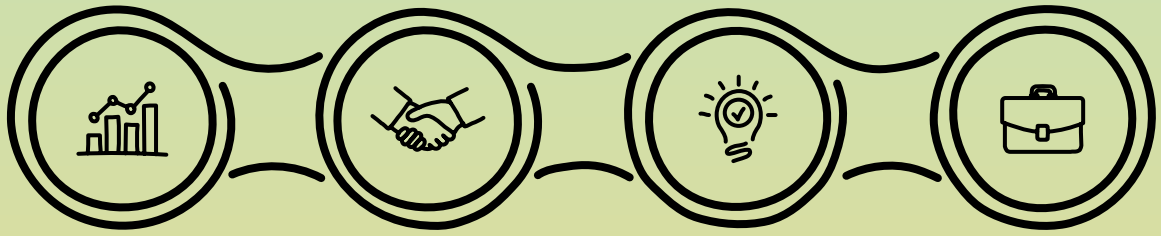
PT FOLIUM SUMATRA NAFIE is engaged in goods and services, especially Agriculture Commodities such as Coffee, Cocoa, Acacia Honey and Powder Sungkai. With the support of an extensive network, reliable 19 resources and good company management.

PT FOLIUM SUMATRA NAFIE is confident that it can compete competitively in the national and international markets by prioritizing integrity and commitment to buyers and business partners. Our Environmental Factors are centered in the industrial area which provides convenience and comfort in terms of Mobilization.

PT FOLIUM SUMATRA NAFIE always prioritizes integrity and commitment to buyers so that they always uphold moral and ethical values in providing professional services



Our Key Features



QUALITY

Quality Starts From Small Habits Such As Making Comfort, Pleasure, Gifts, And Good Communication. And Provide Maximum Results Both In Finance And Products For Customer Or Investors.

INTEGRITY

Integrity Is Faith, Honesty, Truth That Cannot Be Contested, Integrity Also Determines Our Self-image, So Integrity Cannot Bargain.

INOVATION

Innovation Focuses On Design, Development And Ideas That Can Drive Product Services For A Very Broad Market, Which Creates Agreement And Interest In Our Superior Products

COMMITMENT

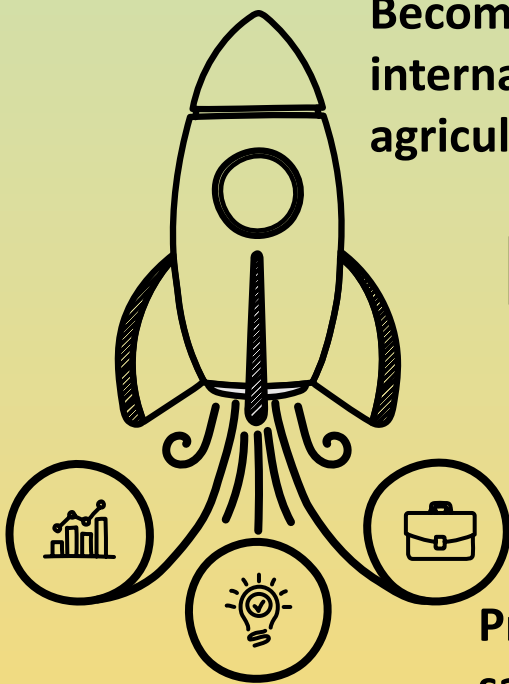
Commitment Is Very Important To Us, So We Always Provide The Best For Our Customers And Investors, Because With This Commitment We Do It Carefully And In A Orderly Manner

Visi

Become a company engaged in Indonesia's leading agriculture provide high quality products and reliable for consumers.

Become an agricultural company provide the best agricultural solutions For Indonesian society.

Become a recognized agricultural company internationally as a leader in quality agricultural production tall.



Misi

Improving the quality of agricultural products manufactured according to standards international.

Providing the best service and satisfying for customers.

Continue to contribute to development the agricultural sector in Indonesia.

Added value to society through activities useful social.

Adopt agricultural practices environmentally friendly and sustainable.

Product Company

The characteristics of Robusta Term Coffee are medium acidity, high body, with notes ranging from dark chocolate, woody and nutty. The distinctive aroma and taste make the Jangkat Robusta coffee a coffee that is widely enjoyed by the public. Term Robusta coffee has the smoothest texture, also known for its thick, bitter taste, just like other coffees from Sumatra. Robusta Jangkat coffee has a more unique coffee bitterness when compared to other robusta coffees. Then from the geographical location, climate, and fertile soil conditions, Jangkat robusta coffee has a different taste from other Indonesian robusta coffees.

cassia cinnamon is new popular in commercial bakeries because of its low cost and because it is the flavor that most Americans expect. It is also known as Java or Indonesian cinnamon. Cassia is not necessarily another name for cinnamon, it is a completely different spice, although they are related. Cassia can be used in anything that you would use cinnamon in and can very much be used as an alternative to cinnamon as well. It is a member of the same family as true cinnamon, but it has a stronger flavor thus requiring less in volume. Cassia is usually a better choice for savory dishes, rather than sweets. Cassia sticks curl inward from both sides, appearing like a scroll.

Industrial forest honey Acacia crassicarpalt is pure honey produced by cultivating bees of the Melifera type; the dominant nectar is taken from the axils of young leaves of the Acacia carpa plant, while multi-nectar honey is taken from wild plants around the beehive. The color is dark red, sometimes pink; this change is because the Melifera bees get quite a lot of multi-nectar. The taste is sweet and slightly sour, and the aroma is typical of acacia plants.

Sungkai (*Peronema canescens*) at the Dayak Tribe East Kalimantan, Kubu Tribe Sumatra they used the herbal as a medicine and care of their health including sungkai's leafs until now. For treatment of fever, influenza, stomachache, antiseptic in the mouth and skincare. Mentioned that the young leafs of Sungkai traditionally used for the antipyretic, anti plasmodium and body's immunity





Hs Code : 0901
Capacity : 80 MT/Monthly
Packing : Net Sack 50kg
Price : Negotible
Port : Belawan Indonesia
Origin : Jambi Indonesia

Hs Code : 0906
Capacity : 20 MT/weeks
Packing : 20kg roll
Price : Negotible
Port : Belawan Indonesia
Origin : Jambi Indonesia




Hs Code : 0409
Capacity : 20 MT/Monthly
Packing : Gallon 30 L
Price : Negotible
Port : Belawan Indonesia
Origin : Jambi Indonesia





Hs Code : 12119011
Capacity : 10 MT/Monthly
Packing : 5 Kg
Price : Negotible
Port : Belawan Indonesia
Origin : Jambi Indonesia




Contact Us

05  nafieexport.com

04  +6285163207765

03  Nafie Export

02  admin@nafieexport.com

01  Nafie Export